

# MEDWAY EDUCATION EXPRESS

VOLUME 1, ISSUE 1

BACK-TO-SCHOOL 2009

## New PreK-6 Math Program Planned

In the spring of 2009 the district hosted a mathematics curriculum review team who recommended the selection of a new standards-based mathematics program for students in grades PreK-6.

As a result, this fall the district will begin to phase implementation of the PreK-6 Everyday Mathematics curriculum, which encourages teachers and students to go beyond simple arithmetic.

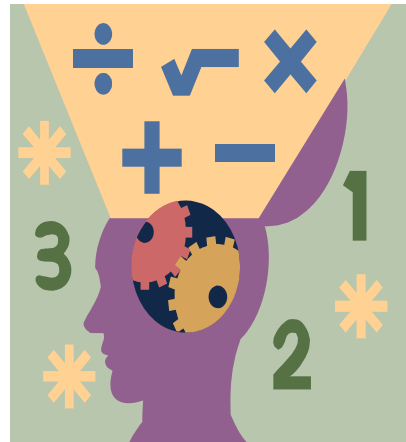
Everyday Math helps students understand and use math by integrating data gathering, analysis,

probability, geometry, patterns and algebra. Mathematics becomes part of the ongoing classroom routines.

A specific concept is introduced from five to fifteen times in five different ways over time, giving students many opportunities to grasp the idea when they are developmentally ready to do so.

For example, multiplication concepts are introduced in kindergarten and first grade with skip counting, in second grade through building arrays, and focused on in-depth in third grade. Students have many exposures

to the concepts before mastery is expected.



INSIDE THIS ISSUE:	
MESSAGE FROM SCHOOL COMMITTEE	2
NEW FACULTY MEMBERS	2
OPENING DAY INFORMATION	3
COMMUNITY SUPPORT FOR SCHOOLS	4
CALENDAR	5
NEW PRE-ENGINEERING PROGRAM AT MHS	6
DISTRICT GOALS	7

## Energy Savings Program Underway

By David Verdolino

Last May, Medway's town meeting approved a comprehensive energy project for the school department. The improvements will be funded from the future energy savings that the project generates. Trane, a large energy services company, will be overseeing all aspects of this project.

Medway Public Schools currently budgets about \$1 million each year to pay for utilities (electricity, natural gas and water). As a result of the "Trane project", we expect to save nearly a quarter of that, or \$250,000, based on current utility rates; in fact,

(continued on page 6)

## SUPERINTENDENT'S CORNER

By Judith Evans, Ed.D.

We are pleased to bring you this first edition of the *Medway School News*.

I am very proud to be entering my second year as superintendent of this fine district. We are blessed with dedicated, hardworking, caring teachers and support staff members, a supportive community, and involved parents. Most of all, we have the privilege of working with a wonderful student body each day. Medway is a very special place in which to live and learn.

If you have any questions, concerns, or suggestions, please feel free to contact me directly at [jevans@medway.k12.ma.us](mailto:jevans@medway.k12.ma.us).

# MESSAGE FROM MEDWAY SCHOOL COMMITTEE CHAIR

By Diane Borgatti

The School Committee has been busy at work over the summer. We have been working to not only support academic excellence for all students, but also to provide a school environment conducive to learning.

We have established school district goals as well as school committee goals for 2009-2010 school year. The district goals along with the school improvement plans proposed by our school principals and school councils will be the cornerstone for curriculum and instruction.

With the generous support of the town and the outstanding efforts of the Trane Energy Review Panel, the Trane project is a reality. This project has allowed the school department to make major capital improvements in our older schools in terms of heating, lighting and plumbing as well as to reduce

energy consumption throughout the district. When you enter a classroom you may not notice a difference in terms of the "look" of the heating system, but the difference will be felt by the students and staff this winter. Please check our website for updates as the school committee pursues additional much needed capital improvements for the Middle School through the Massachusetts School Building Authority.

Communication with parents and the community is a major goal of the school committee. As we advocate for the best interests of our students, we need to be informed of the opinions and viewpoints of the citizens of Medway. Please take a minute to review the school improvement plans, district goals and school committee goals on the school website. If you have any questions or concerns,



school committee members will be available at all open houses this fall to address any issues you may have. We welcome your thoughts.

Diane Borgatti, Chair

Debora Trindade, Vice Chair

Carole Bernstein

Jeff DeVolder

Shelley Wieler

## DISTRICT WELCOMES NEW FACULTY MEMBERS

### High School

**Spencer Christie**, English teacher, B.A. Union College, M.Ed. Boston College

**Ann Gay**, Foreign Language teacher, B.A. University of Kansas

**Randa Istfan**, Chemistry/Physics teacher, B.S. American Univ. Beirut, M.S. Chelsea College/London, Ph.D. American University of Beirut

**Andrew Nassiff**, Math teacher, B.A. Grinnell College, M.Ed., Univ. N.E.

**Dorothy Pearl**, Guidance Counselor/ School Adjustment Counselor, B.S., M. Ed. Bridgewater State College

**Mark Warren**, Learning Center teacher, B.A. Clark, M.S. Simmons College, CAGS Fitchburg State College

### Middle School

**Meredith Chambers**, Learning Center teacher, B.A. The College of William and Mary, M.Ed. Vanderbilt University

**Priscilla Ewen**, Math/Language Arts Teacher, B.A. Guilford College, M.Ed. UMass-Boston

**Kristy Macedo**, Science teacher, B.A. Rhode Island College, M. Ed. Lesley College

**Mette Schwartz**, Curriculum/ Instructional Coach, B.S. Marlboro College, M.S. Rutgers, Ph.D. Colorado State

**Jodi Winston**, Learning Center teacher, B.A. UMass-Amherst, M.Ed. American International College

### McGovern

**Colleen Rommel** Grade 1 and Grade 2 teacher, B.A. Stonehill College

**Robert Mahoney**, Grade 2 teacher, B.A. Franklin and Marshall College, M.S. Regis College

### Memorial

**Joseph Parkhurst**, Instructional Coach, B.A. Central Connecticut State University, M. Ed. Sacred Heart University

**Kimberly Condon**, Speech/Language Pathologist, B.S. Univ. New Hampshire, M.S. University of New Mexico

### Burke

**Janet Caron**, SPED Learning Center teacher, B.S., M.Ed. Bridgewater State

**OPENING DAY**

School opens on Wednesday, September 2, 2009.

**Grades 1 and 2 at McGovern**

**Elementary School**

**9:00 a.m. to 3:00 p.m.**

\*\*\*

**Grades 3 and 4 at Memorial**

**Elementary School**

**8:30 a.m. to 2:30 p.m.**

\*\*\*

**Grades 5-8 at Medway Middle School**

**7:40 a.m. to 1:58 p.m.**

\*\*\*

**Grades 9-12 at Medway High School**

**8:04 a.m. to 2:31 p.m.**

\*\*\*

The first regular day for kindergarten and pre-kindergarten will be Monday, September 7<sup>th</sup>.

**Burke Elementary School****Full Day Kindergarten Program**

**9:00 a.m. to 3:00 p.m.**

\*\*\*

**2 1/2 Day Kindergarten Program**

**A Session: Monday Morning –  
9:00 a.m. to 11:40 a.m.**

**Wednesday and Friday – 9:00  
a.m. to 3:00 p.m.**

\*\*\*

**B Session: Monday Afternoon –  
12:20 p.m. to 3:00 p.m.**

**Tuesday and Thursday – 9:00 a.m.  
to 3:00 p.m.**

\*\*\*

**Pre-Kindergarten at Burke**

**Elementary School**

**8:45 a.m. to 11:15 a.m.**

## Learning Through Open Circle

By Eileen Harvey

Open Circle is a nationally-recognized social and emotional learning program. It is a research-based program that has shown increases in students' social skills and decreases with problem behaviors. It helps children develop socially and emotionally by providing a common language and expectations.

Building a safe, caring learning environment that promotes self management, conflict negotiation, communication, team work and problem solving skills aligns with the Medway Public Schools core values. We have embraced this program at the elementary level and feel it plays a critical role in developing the whole child.

Every teacher in pre-kindergarten through grade four has participated in a year long training program at Wellesley College, and almost all of our support staff has attended a one day workshop to familiarize them with the language and philosophy of the program.

Teachers conduct a twenty to thirty minute lesson each week that addresses a specific social skill. For example, the kindergarten students might be learning about non-verbal signals while fourth graders are learning specific steps to take when problem solving with peers. The skills are reinforced throughout the day by all members of the faculty.

Parents can expect informational letters summarizing the skills and concepts the children are learning.

## Kindergarten Summer Camp

By Leigh Becker

From July 13-24, 104 incoming kindergarten students participated in Kindergarten Summer Camp at Burke-Memorial School. Judi Johnstone, kindergarten teacher, has organized and directed the camp for the past twelve years. The purpose of kindergarten camp is to acquaint new students to our school building, to each other, to members of the faculty and staff, and to some of the routines and activities they can look forward to come September.

During camp children also get a tour of the school, getting a first

peek at the library and cafeteria, and learning some of the safety rules while playing at the playground. Children also get to know each other to ensure a few familiar faces on the first day of school.

One of the highlights of the week is a ride on the big yellow school bus. Each year Holmes Transportation donates a bus for a day, and driver Sue Robinson comes to teach the children about bus safety and take them for a ride around the neighborhood.



## COMMUNITY SUPPORT FOR MEDWAY SCHOOLS

### Educational Fund Committee

The Ed Fund Committee is appointed by the Board of Selectmen and is charged with distributing donations made to the fund. The committee grants requests made for schools by principals and submitted to the committee through the superintendent.

Current committee members are: Heidi Anderson, Joann Bruce, Marion Cole, Lou-Ellen Maiorana, and Mindy Peden.

The committee hopes to raise awareness of the fund and increase donations. The fund has provided funding for the printing and distribution of this newsletter.

Donations to the fund may be made directly or through the form provided by the town with tax bills.

For further information about the Educational Fund, please contact Dr. Judith Evans, Superintendent at [jevans@medway.k12.ma.us](mailto:jevans@medway.k12.ma.us).

### The Medway Foundation for

#### Education

MFE is a non-profit, non-political organization established to preserve and improve Medway's quality education while reducing the impact of limited school budget funding. MFE seeks to provide community members with a positive, proactive means of contributing to the well-being of our children and simultaneously contribute to Medway's financial vitality.

MFE can only succeed with your help. You can support MFE in a variety of ways, such as:

- Corporate Matching Gift Programs
- Gifts of Cash, Stock, Real Estate, Life Insurance
- Bequests, Volunteering

Contact [www.MedwayEducation.org](http://www.MedwayEducation.org) website or e-mail [mfe@medwayschools.org](mailto:mfe@medwayschools.org).

### Parent/Booster Groups

#### **Medway Secondary Home & School Association, Inc.**

meets the first Wednesday of every month at 7:30 p.m. in the High School Guidance area. Our website can be accessed at [www.medwayshsa.org](http://www.medwayshsa.org).

\*\*\*\*\*

#### **Medway Elementary PTO**

first meeting of the 2009-10 year on Wednesday, September 23, 2009 at 7:30 PM in the Memorial School Cafeteria. <http://www.mepto.org/>

\*\*\*\*\*

A wide variety of booster groups provide tremendous support to our students. Links to these groups can be found at the following website: <http://www.medwaytoday.com/>

## OPEN HOUSE SCHEDULE

<b>Burke School</b>	Wednesday	6:30 p.m.
<b>McGovern School</b> <b>Grades 1 &amp; 2</b>	Thursday September 24	6:30 p.m.
<b>Memorial School</b> <b>Grade 3 Only</b>	Tuesday September 15	7:00 p.m.
<b>Memorial School</b> <b>Grade 4 Only</b>	Wednesday September 16	7:00 p.m.
<b>Middle School</b> <b>Grade 7 &amp; 8 Only</b>	Wednesday September 9	6:45 p.m.
<b>Middle School</b> <b>Grades 5 &amp; 6 Only</b>	Monday September 14	6:45 p.m.
<b>High School</b> <b>Grades 9-12</b>	Tuesday September 22	6:30 p.m.



Medway students were hard at work at Memorial School this summer at a Writing Workshop sponsored by an MFE grant.

Medway Public Schools  
Medway, MA 02053

2009

September

(19 days)

M	T	W	T	F
	PD	SO	3	4
LD	8	9	10	11
14	15	16	17	18
21	22	23	24	25
YK	29	30		



September 1 - Professional Development Day for Faculty/Staff  
September 2 - School Opens  
September 7 - Labor Day - NO SCHOOL  
September 28 - Yom Kippur - NO SCHOOL

October

(21 days)

M	T	W	T	F
			1	2
5	6	7	8	ER
CD	13	14	15	16
19	20	21	22	23
26	27	28	29	30



October 12 - Columbus Day - NO SCHOOL

November

(18 days)

M	T	W	T	F
2	3	4	5	6
9	10	VD	12	13
16	17	18	19	ER
23	24	/	X	X
EER				



November 11 - Veterans Day - NO SCHOOL  
November 25 - Half Day - Gr. K-12  
November 26-27 - Thanksgiving Recess

December

(17 days)

M	T	W	T	F
	1	2	EER	4
7	8	9	10	11
14	15	16	17	18
21	22	23	X	X
X	X	X	X	



December 24 - January 1 - Holiday Vacation - NO SCHOOL

January

(19 days)

M	T	W	T	F
				NYD
4	5	6	7	8
11	12	13	14	ER
MLK	19	20	21	22
25	26	27	28	29



January 1 - New Year's Day Observance - NO SCHOOL  
January 4 - SCHOOL REOPENS  
January 18 - Martin Luther King Jr. Day - NO SCHOOL

2010

February

(15 days)

M	T	W	T	F
1	2	3	4	5
8	9	10	11	12
X	X	X	X	X
22	23	24	25	26



February 15-19 - Winter Vacation - NO SCHOOL

March

(23 days)

M	T	W	T	F
1	2	3	4	5
8	9	10	11	12
15	16	17	18	19
22	23	24	25	26
29	30	31		



April

(16 days)

M	T	W	T	F
			1	GF
5	6	7	8	9
12	13	14	15	16
X	X	X	X	X
26	27	28	29	30



April 2 - Good Friday - NO SCHOOL  
April 19-23 - Spring Vacation - NO SCHOOL

May

(20 days)

M	T	W	T	F
3	4	5	6	7
10	11	12	13	ER
17	18	19	20	21
24	25	26	27	28
MD				



May 31 - Memorial Day - NO SCHOOL

June

(12 days)

M	T	W	T	F
	1	2	3	4
7	8	9	10	11
14	15	180th	17	18
21	22	23	24	25
28	29	30		



June 16 - 180<sup>th</sup> Day - Tentative Closing - Half Day Gr. K-12  
June 17-30 - Inclement Weather Makeup Days

ER = Early Release Day - Grades K-12  
EER = Elementary Early Release Days K-4 ONLY

20092010wER  
Approved: 1/15/09  
ER Days Approved: 5/21/09

### Energy Project (continued from page 1)

Trane guarantees we will save (or they pay the difference). That means we will be able to allocate more to educate our students and less will go (in some cases literally) “out the window” in energy costs.

But it gets even better from an educational standpoint. Classroom environments will become much more conducive to teaching and learning. We will also add energy-conservation topics to our curriculum, including the ability to use data that Trane produces from its project.

Items to be upgraded include heating, lights, motors, computerized con-



trols, even bathroom fixtures and drinking fountains. All of these will present a 21<sup>st</sup> century level of energy efficiency.

We hope that it encourages a generation of students who encounter these energy-savings measures to place a high value on conservation

## District Hires New Student Services Director

We are pleased to welcome Lauren Fain, who is the district's new Director of Student Services. Ms. Fain holds a B.A. from Curry College and an M.Ed. From Lesley College.

She has extensive experience in working with a wide range of student disabilities in both the public and private sectors, and brings expertise in special education program development.

## NEW PRE-ENGINEERING PROGRAM OFFERED AT MHS

By Richard Pearson

For the first time this fall, students at Medway High School will be able to enroll in pre-engineering courses through a new program called Project Lead the Way (PLTW). The first of three year-long courses, Introduction to Engineering, will be offered to twenty-four students. Joan Hallett, a physics teacher at the high school, attended a two-week intensive training session in July and she will be the teacher for the program.

PLTW is a non-profit organization that promotes pre-engineering courses for middle and high school students by forming partnerships with public schools, higher education institutions and the private sector to increase the quantity and

quality of engineers and engineering technologists graduating from our schools. PLTW was first introduced in 1997 to twelve New York State high schools. Today, its programs are offered in some 3,000 high schools across America.

The high school program offered by PLTW and which Medway High School will be starting up in the fall is called Pathway to Engineering. In this program, students will be introduced to math and science concepts in a relevant, riveting manner that teaches them to reach beyond their classroom and into the real world.

The first tier of the curriculum consists of three foundation courses which include Introduction to Engineering, Digital Electronics and Principles of Engineering.

Over the next two years, all three foundation courses will become a part of the high school's curriculum. A specialty course will then be added, representing tier two of the engineering program. This course will be chosen from one of the following: Computer Integrated Manufacturing, Civil and Environmental Engineering, Aerospace Engineering, Biotechnical Engineering and Engineering Design and Development.

The long range goal is for students to remain in the program for four years. PLTW has agreements with a number of colleges and universities who will accept certain PLTW courses for credit. The district is pleased to be able to offer this innovative and enriching program to our students.

# DISTRICT GOALS FOR 2009-2010

1. Use student performance data to support higher levels of student achievement.
2. Support year two of the grade K-5 core literacy program in order to improve student achievement in reading.
3. Implement the PreK-6 Everyday Mathematics program through a phased-in process.
4. Implement the PreK-12 curriculum review process to ensure appropriate articulation, integration, and alignment of curriculum, instructional strategies, and assessment.
5. Assess the effectiveness of the current grade 7/8 mathematics program and make recommendations for improvement, including program revision.
6. Develop and implement short-term and long-term district technology plans that provide for appropriate levels of instructional technology to support improved teaching and learning.
7. Review the current school/grade-level configuration for students in grades PreK-4.
8. Develop a professional development plan that provides high-quality programs for all teachers and support staff.
9. Establish a joint MFT/Admin team to review and revise the district's teacher supervision and evaluation model in order to support continuous improvement in teaching and learning.
10. Put instructional coaches in place to support improved student achievement PreK-8.
11. Review district and school-based interventions for at-risk and accelerated learners and make recommendations for improvement.
12. Review district and school-based programs for students with disabilities and make recommendations for improvement.
13. Review the district's core values, mission, and vision and use these to drive decision-making.
14. Sustain effective, respectful, relationships between school employees and town officials, and community members to ensure effective collaboration on key issues.
15. Develop a school department budget for FY11 that will support high levels of student achievement.
16. Review and update the district capital improvement and facilities management plan.

**EXCELLENCE FOR ALL  
THROUGH LEARNING**

**CONTACT**

**INFORMATION**

Burke School  
508-533-3242

Memorial School  
508-533-3266

McGovern School  
508-533-3243

Medway Middle School  
508-533-3230

Medway High School  
508-533-3227

**Your ad could appear here!**

Advertising revenue helps offset our printing and mailing costs. A \$125 contribution will enable you to put a business card advertisement in this space. Contact [cvilla@medway.k12.ma.us](mailto:cvilla@medway.k12.ma.us) for details.



[JA Painting and Home Improvement](#)

Specializing in interior painting  
Contact Jeff for free estimate:

(508) 259-1057

[ja\\_painting@verizon.net](mailto:ja_painting@verizon.net), [www.japainting.com](http://www.japainting.com)

---

Office of the  
Superintendent  
45 Holliston Street

---

MEDWAYSCHOOLS.ORG

---

NON-PROFIT  
ORGANIZATION  
U.S. POSTAGE PAID

PERMIT NO. 38  
MEDWAY, MA

POSTAL CUSTOMER  
MEDWAY, MA 02053